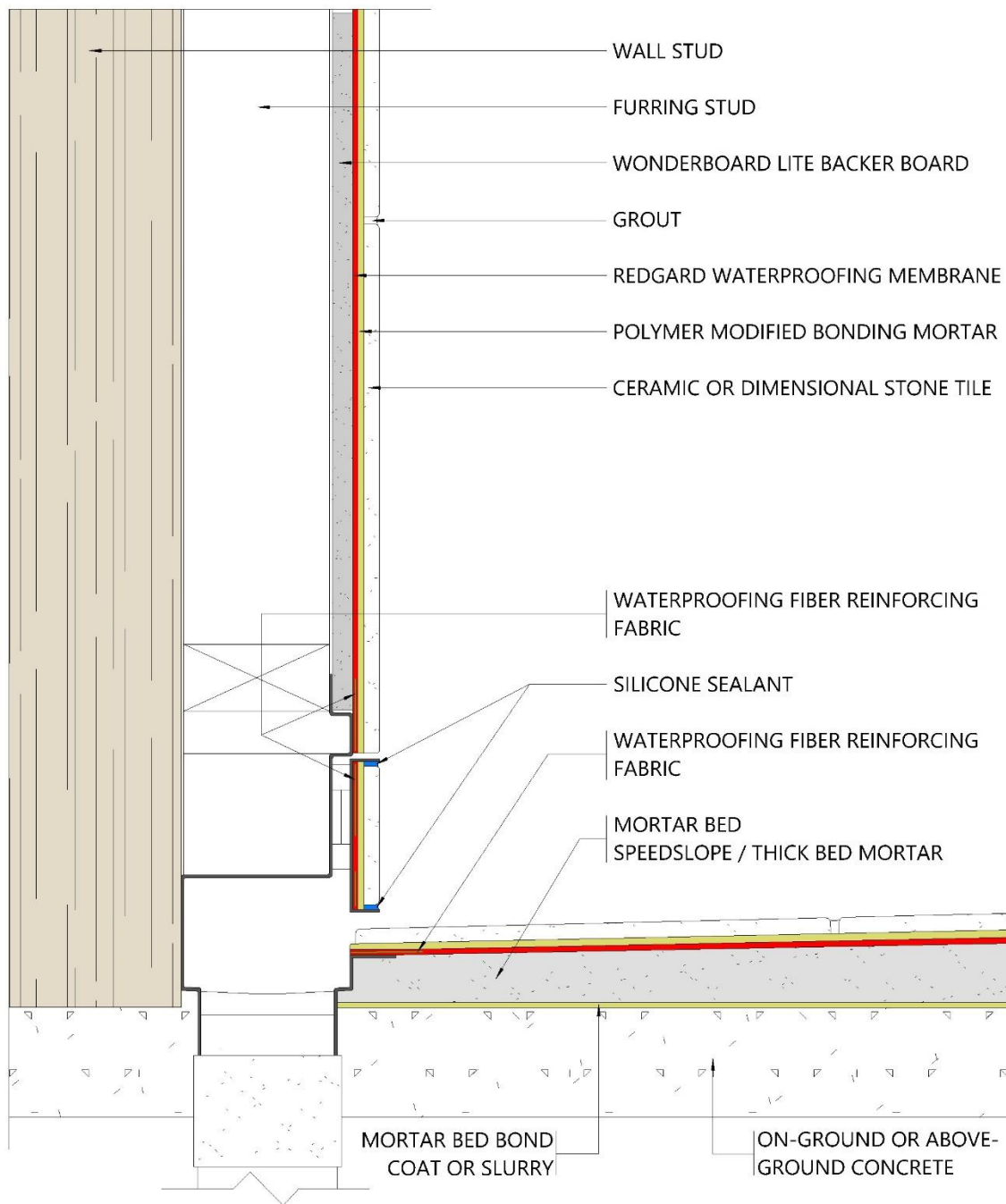


DUW SERIES - Recessed Wall Linear Floor Drain



NOTE: Illustration shows the necessary components of the tile installation method, including the substrate. This has not been drawn to scale. It is intended to clearly identify and label each component and its placement in the assembly.



DUW SERIES - Recessed Wall Linear Floor Drain

CUSTOM® Building Products Limited Systems Warranty is available when installed with **DRAINS UNLIMITED - DUW SERIES**. Length of warranty is based on appropriate bonding mortar .

CUSTOM® Product Options

Membrane Options:

- RedGuard® Waterproofing and Crack Prevention Membrane (Liquid Applied) ANSI A118.10 & A118.12)
- RedGuard® SpeedCoat® Waterproofing Membrane
- Custom® 9240 Waterproofing and AntiFracture Membrane (Liquid Applied) ANSI A118.10 & A118.12)

Mortar Options:

Large and Heavy Tile Applications

- MegaLite® Ultimate Crack Prevention Large Format Tile Mortar (ANSI A118.15 TE)
- MegaLite® RS Ultimate Rapid Setting Crack Prevention Large Format Tile Mortar (ANSI A118.15F)
- ProLite® Premium Large Format Tile Mortar (Ideal for Large Format Tiles) (ANSI A118.15 TE)
- ProLite® RS Premium Rapid Setting Large Format Tile Mortar (ANSI A118.15F)
- Complete Contact-LFT Premium Rapid Setting Large Format Tile Mortar (ANSI A118.15F)
- Natural Stone & Large Tile Premium Mortar (ANSI A118.11)
- VersaBond®LFT Professional Large Format Tile Mortar (ANSI A118.11)

Thin-set Applications

- FlexBond® Premium Crack Prevention Thinset Mortar (ANSI A118.15)
- Glass Tile Premium Thin-Set Mortar (ANSI A118.15)
- Porcelain Tile Professional Thin-Set Mortar (ANSI A118.15)
- VersaBond Flex® Professional ThinSet Mortar (ANSI A118.11)
- VersaBond® Professional ThinSet Mortar (ANSI A118.11)
- SpeedSet™ Fortified ThinSet Mortar (ANSI A118.11F)

Chemical Resistant Applications

- EBM-Lite™ Premium Epoxy Bonding Mortar — 100% Solids (ANSI A118.3)

Mortar BED Options:

- Fast Setting Thick BED Mortar - Thin-Set & Mortar Admix; recommended for demanding applications
- CUSTOM® SpeedSlope® Rapid Setting Sloping Mortar – Rapid Setting Polymer-modified Mortar BED

Grout Options:

- Polyblend® Grout – Sanded and Non-Sanded Grouts (ANSI A118.6)
- Fusion Pro® Single Component® Grout* (Meets many performance characteristics of ANSI A118.7 & A118.3)
- Prism® Ultimate Performance Cement Grout (Shade and Efflorescence Control) (ANSI A118.6 & A118.7)
- CEG-Lite™ 100% Solids Commercial Epoxy Grout (ANSI A118.3)
- CEG-IG 100% Solids Industrial Grade Epoxy Grout (ANSI A 118.3) and meets many of the performance characteristics of ANSI A118.5 for Furan Grouts.

Flexible Sealant:

- Commercial 100% Silicone Sealant (Meets the requirements of ASTM C-920, ASTM C1248 and TCNA EJ 171)

Movement joints: Movement joints and cracks in the substrate as described in ANSI A108.01 and TCNA EJ171 should receive proper preparation and treatments. For additional information and support visit our website at www.custombuildingproducts.com or contact CUSTOM Building Products Technical Services Department @ 800 282 8786

